

ZOOMLION

NEW ZTH4525R ZTH4518R TELEHANDLER



FEATURES

Standard

- ▶ Horn
- ▶ Reversing buzzer
- ▶ Flashing beacon
- ▶ Electro-hydraulic proportional control
- ▶ Emergency stop system
- ▶ Work light
- ▶ 10.1in color display
- ▶ Automatic leveling fork
- ▶ Inching
- ▶ Moment limiting system
- ▶ Heating and cooling air condition
- ▶ Attachment automatic identifying system
- ▶ ECO mode
- ▶ Fault diagnosis
- ▶ USB port
- ▶ Bluetooth
- ▶ Radio
- ▶ Click-to-retract
- ▶ XY axis action
- ▶ Position memory
- ▶ Auxiliary power
- ▶ Door monitoring system
- ▶ Seat occupied monitoring system

Option

- ▶ Quick connect hydraulic bolt function
- ▶ Reversing camera
- ▶ Remote screen projection
- ▶ Remote control
- ▶ Cold start pack

Optional attachments

- ▶ Floating fork
- ▶ Bucket
- ▶ Crane boom (with winch)
- ▶ Platform
- ▶ Hydraulic winch
- ▶ Single hook
- ▶ Vacuum cup
- ▶ Multi-dimensional mechanical gripper

HIGHLIGHTS

- ▶ Hydrostatic driving for comfort driving experience and fast traveling speed
- ▶ 4x4 driving system provides large traction force and good off-road ability
- ▶ 360° continuous rotating, large working range, adapt to various working conditions
- ▶ 10.1-inch display screen integrates monitoring, control and entertainment, with a good human-computer interaction experience
- ▶ Standard floating fork and optional platform, bucket, boom and other attachments meet the diverse needs of customers

ACCESS WITH ZOOMLION GREEN

Phone: 0086(731)-88353680 0086(731)-88250971
E-mail: awp@zoomlion.com

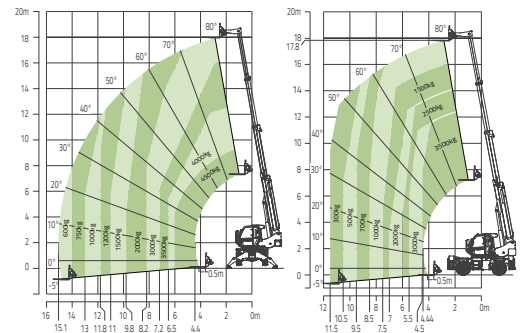
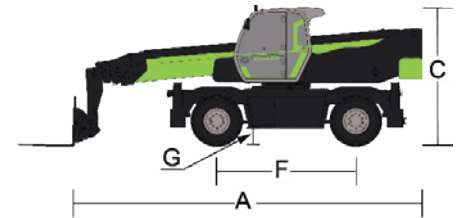
Add: 701 Xulong Nan Lu, Xiangjiang New District, Changsha Hunan, China
Web: www.zoomlion-access.com

MAIN SPECS OF TELEHANDLER

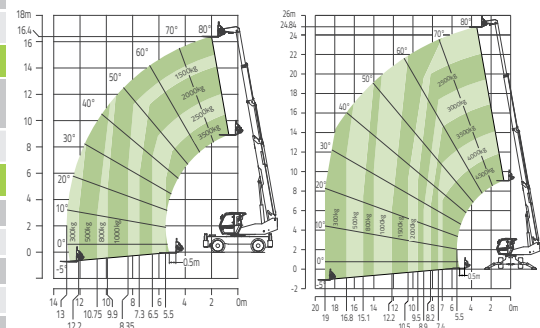
ZTH4525R/ZTH4518R

Comply with CE Standard

Model	ZTH4518R		ZTH4525R	
	Metric	Imperial	Metric	Imperial
Size				
A Overall length	7.33m	24ft 1in	8.9m	29ft 2in
B Overall width	2.45m	8ft	2.48m	8ft 2in
C Overall height	3.11m	10ft 2in	3.04m	9ft 11in
F Wheelbase	2.6m	8ft 6in	3.07m	10ft 1in
G Min ground clearance	0.37m	1ft 3in	0.4m	1ft 4in
Performance				
Rated capacity	4500kg	9920lb	4500kg	9920lb
Max lift height	18m	59ft 1in	24.8m	81ft 4in
Lift capacity at max height	3000kg	6613lb	2000kg	4409lb
Max forward reach	15.1m	49ft 6in	19m	62ft 4in
Lift capacity at max reach	600kg	1322lb	300kg	661lb
Weight	14300kg	31526lb	16000kg	35273lb
Max traction force	90kN	20232lb	90kN	20232lb
Turning radius - outside	3.6m	11ft 9in	4.2m	13ft 9in
Power				
Engine	Cummins F4.5		Cummins F4.5	
Rated power	89kw	119.35Hp	89kw	119.35Hp
Max torque	500Nm	368lb*ft	500Nm	368lb*ft
Cylinder	4		4	
Displacement	4500ml	1.18gal	4500ml	1.18gal
Transmission	Hydrodynamic		Hydrodynamic	
Max drive speed	40km/h	24.85mph	40km/h	24.85mph
Steering	2WS/4WS/Crab		2WS/4WS/Crab	
Tire				
Type	405/70-20 18PR		445/65-22.5	
Hydraulic				
Implement pump	Piston pump		Piston pump	
Hydraulic flow - pressure	107L/min-270bar	28.26gal/min-270bar	107L/min-270bar	28.26gal/min-270bar
Tank				
Hydraulic tank capacity	145L	38.3gal	145L	38.3gal
Fuel tank capacity	140L	37gal	140L	37gal
Fork				
Fork size	1220mm×150mm×50mm	4ft×5.9in×1.968in	1220mm×150mm×50mm	4ft×5.9in×1.968in
Fork rotary	118°		118°	
Working speed				
Boom up/down	26/19s		33/19s	
Boom extend/retract	20/21s		30/25s	
Fork lift	6s		6s	
Fork retract	5s		5s	
Rotate speed	2.3s		2.3s	
Outrigger lowering	6s		6s	
Outrigger retracting	5s		5s	



Range of Motion ZTH4518R



Range of Motion ZTH4525R