

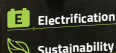
ZOOMLION

# NEW ZX27AE SPIDER LIFT

## HIGHLIGHTS

- ▶ 0.89m ultra-narrow width, quick-change work platform, easy access to compact spaces
- ▶ Pure lithium-ion battery power features environmental protection and quiet operation
- ▶ Accurate and efficient permanent magnet synchronous motor provides strong power and stable control
- ▶ Non-marking rubber track suitable for all terrains
- ▶ Central layout, great structural rigidity, and small boom deflection
- ▶ Bus hydraulic valve control system offers stable and reliable movement
- ▶ Advanced energy management system supports synchronous power supply from external power supply, providing long-lasting battery life

CE Certified



## FEATURES

### Standard Features

- ▶ Proportional control
- ▶ All motion alarm
- ▶ Flashing beacon
- ▶ Self-closing entry gate
- ▶ Emergency descent system
- ▶ Emergency stop button
- ▶ Auto-leveling system
- ▶ On-board diagnostic system
- ▶ Auto-leveling outrigger
- ▶ Non-marking rubber track
- ▶ Load sensing system
- ▶ Color display
- ▶ Horn
- ▶ Hour meter
- ▶ Use while charging
- ▶ Wireless remote
- ▶ Proportional handle steering
- ▶ 60A Lithium-ion Battery Smart Charger
- ▶ Battery level display
- ▶ Low battery protection

### Accessories & Options

- ▶ AC power to platform
- ▶ Air line to platform

ACCESS WITH ZOOMLION GREEN

Phone: 0086(731)-88353680 0086(731)-88250971  
E-mail: awm@zoomlion.com

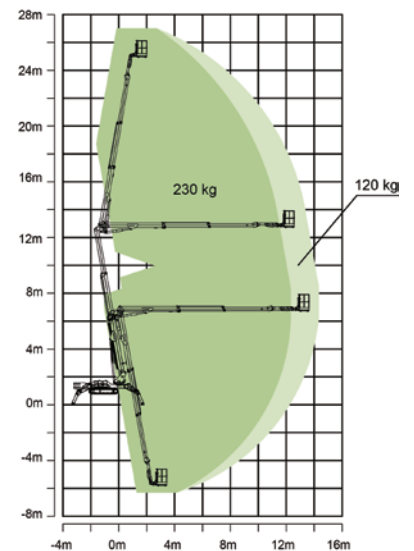
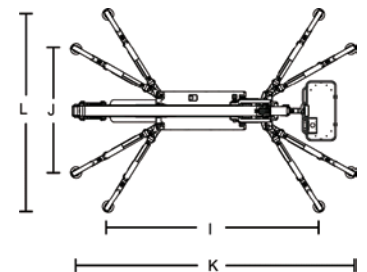
Add: ZOOMLION Wangcheng Industrial Park, Tengfei Road 997, Changsha, Hunan, China  
Web: www.en.zoomlion.com

# MAIN SPECS OF SPIDER LIFT

## ZX27AE

Comply with CE Standards

| Model  | ZX27AE                                   |  |
|--|--|--|
|  | Metric                                   | Imperial                                   |
| <b>Size</b>                                      |  |  |
| Work Height                                      | 27m                                      | 88ft 7in                                   |
| Platform Height                                  | 25m                                      | 82ft                                       |
| Horizontal Outreach                              | 14.2m                                    | 49ft 7in                                   |
| Up and Over Height                               | 12.7m                                    | 41ft 8in                                   |
| Below Ground Reach                               | 5.8m                                     | 19ft                                       |
| A - Stowed Length (w/ platform)                  | 6.15m                                    | 20ft 2in                                   |
| D - Stowed Length (w/o platform)                 | 5.7m                                     | 18ft 8in                                   |
| B - Stowed Width                                 | 0.89m                                    | 2ft 11in                                   |
| C - Stowed Height                                | 2.05m                                    | 6ft 9in                                    |
| E - Platform Length                              | 1.4m                                     | 4ft 7in                                    |
| F - Platform Width                               | 0.7m                                     | 2ft 4in                                    |
| G - Platform Height                              | 1.25m                                    | 4ft 1in                                    |
| H - Crawler Size (Length×Width)                  | 1.52m×0.25m                              | 4ft 11in × 10in                            |
| I - Max Length w/ Outrigger Extending (Standard) | 4.95m                                    | 16ft 3in                                   |
| L - Max Width w/ Outrigger Extending (Standard)  | 4.48m                                    | 14ft 8in                                   |
| K - Max Length w/ Outrigger Extending (Narrow)   | 6.45m                                    | 21ft 2in                                   |
| J - Max Width w/ Outrigger Extending (Narrow)    | 2.88m                                    | 9ft 5in                                    |
| Outrigger Pad Size (Diameter)                    | 0.26m                                    | 10ft                                       |
| Approach Angle                                   |  | 15°  |
| Departure Angle                                  |  | 24°  |
| <b>Performance</b>                               |  |  |
| Platform Capacity                                | 230kg(restricted)<br>120kg(unrestricted) | 510lb (restricted)<br>265lb (unrestricted) |
| Drive Speed                                      | 2km/h                                    | 1.25mph                                    |
| Gradeability                                     |  | 16.7° /30%                                 |
| Allowable Tilting Angle When Driving             |  | 10° /17%                                   |
| Turntable Swing                                  |  | 400° non-continuous                        |
| Platform Rotation                                |  | ±90°                                       |
| H-Tail Swing                                     |  | 0m   |
| Max Leveling Angle                               |  | 16°  |
| Max Wind Speed                                   | 12.5m/s                                  | 28 mph                                     |
| <b>Power</b>                                     |  |  |
| Battery  |  | 315Ah 48V                                  |
| Charger  |  | 48V/60A                                    |
| Drive Motor                                      |  | Permanent magnet synchronous motor 48V     |
| Lift Motor                                       |  | Permanent magnet synchronous motor 48V     |
| Auxiliary Power                                  |  | Electric pump                              |
| Hydraulic Tank Capacity                          | 50L                                      | 13.2 us gal                                |
| <b>Tire</b>                                      |  |  |
| Crawler type                                     |  | K250×47×88 non-marking rubber crawler belt |
| <b>Weight</b>                                    |  |  |
| Gross weight                                     | 4650kg                                   | 10251 lb                                   |
| Ground Pressure When Driving                     |  | 33.68kN/m <sup>2</sup>                     |
| Ground Pressure When Working (Standard)          |  | 2.05kN/m <sup>2</sup>                      |
| Ground Pressure When Working (Narrow)            |  | 2.45kN/m <sup>2</sup>                      |
| Pressure on Single Outrigger When Working        |  | 31.89KN                                    |



Range of Motion ZX27AE